

*Michael R. Wigley, AIA, LEED AP  
W. Zachary Crouch, P.E.  
Michael E. Wheelleton, AIA, LEED GA  
Jason P. Loar, P.E.  
Ring W. Lardner, P.E.  
Jamie L. Sechler, P.E.*

**WACHAPREAGUE SEWER FEASIBILITY STUDY**  
TOWN OF WACHAPREAGUE  
ACCOMACK COUNTY, VIRGINIA  
DBF #3904F001.A01

July 8, 2021

**ENGINEER'S REPORT TO TOWN COUNCIL**

**Introduction**

Robert Duma, P.E., Associate  
Davis, Bowen & Friedel, Inc.  
[rjd@dbfinc.com](mailto:rjd@dbfinc.com)  
(410) 543-9091

**Regional Sewer**

- HRSD proceeding with constructing forcemain from Nassawadox, through Exmore, to Onancock.
- HRSD will come within two miles of Wachapreague
- HRSD will have capacity to serve the sewer needs of Wachapreague

**Town Sewer**

- Targeting commercial and water front commercial sewer needs with study
- Future sewer needs can be met with additional phases of sewer expansion
- Sewer flows provided in table
- Study reviewing gravity sewer, grinder pumps, or vacuum sewer collection system

**Next Steps**

- Continue coordinating with HRSD
- Receive preliminary alignment and design data of pipeline from HRSD
- Receive input from Town Council and other interested parties
- Finalize study and provide project costs



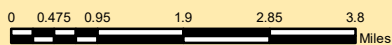
**Legend**

- Pump Station
- HRSD Pipeline
- Forcemain
- Sewer
- Town Boundary
- VIMS Service Area
- Downtown Service Area

**Preliminary Exhibit**



July 2021



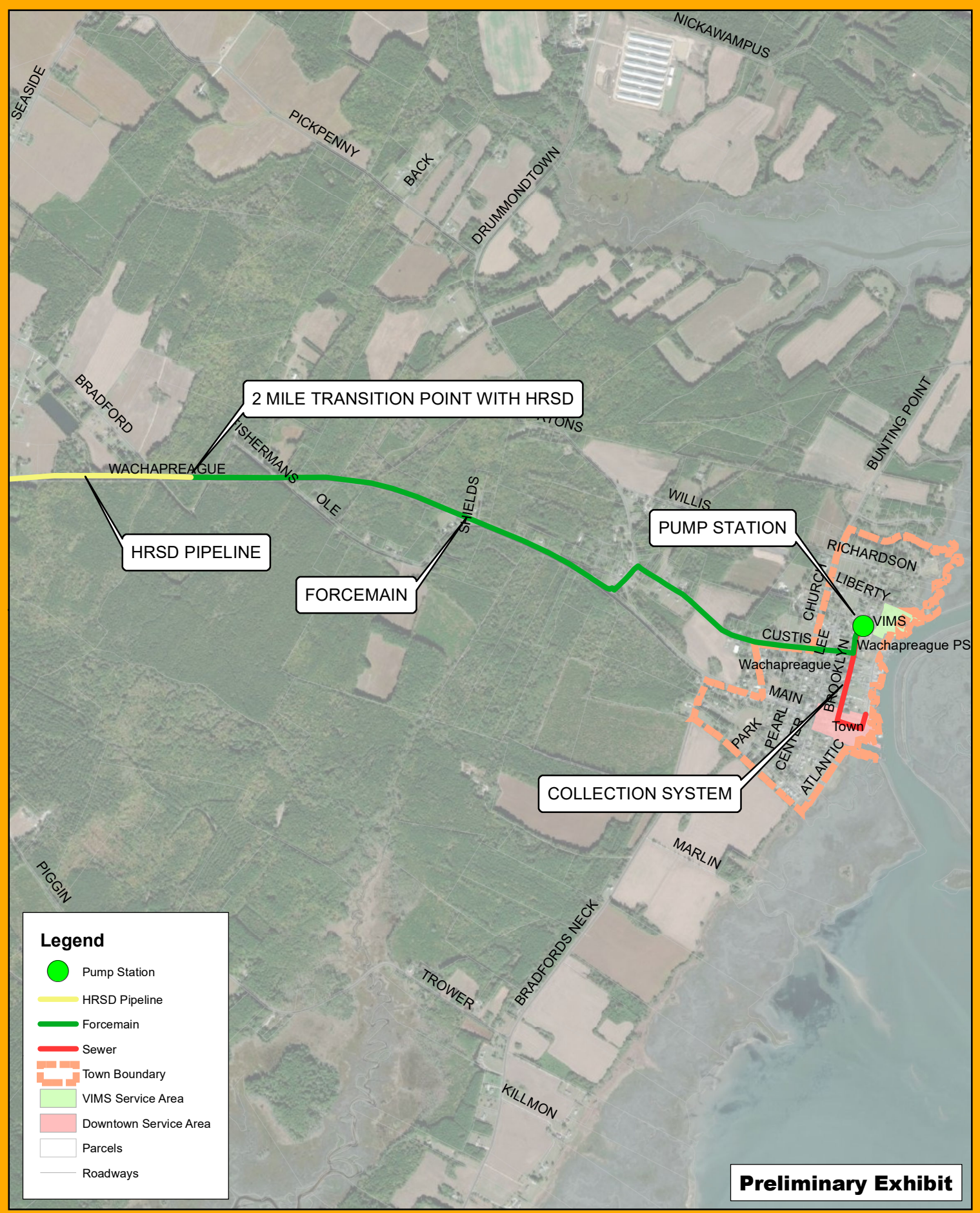
# Overall Sewer Map

Wachapreague Sewer Feasibility Study

DBF #3904A001.A01



L:\3904A Wachapreague\3904A001.A01 Sewer Feasibility Study\DESIGN\GIS\Maps\Wachapreague Layout Map.mxd



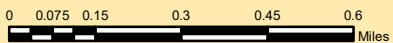
**Legend**

- Pump Station
- HRSD Pipeline
- Forcemain
- Sewer
- Town Boundary
- VIMS Service Area
- Downtown Service Area
- Parcels
- Roadways

**Preliminary Exhibit**



July 2021



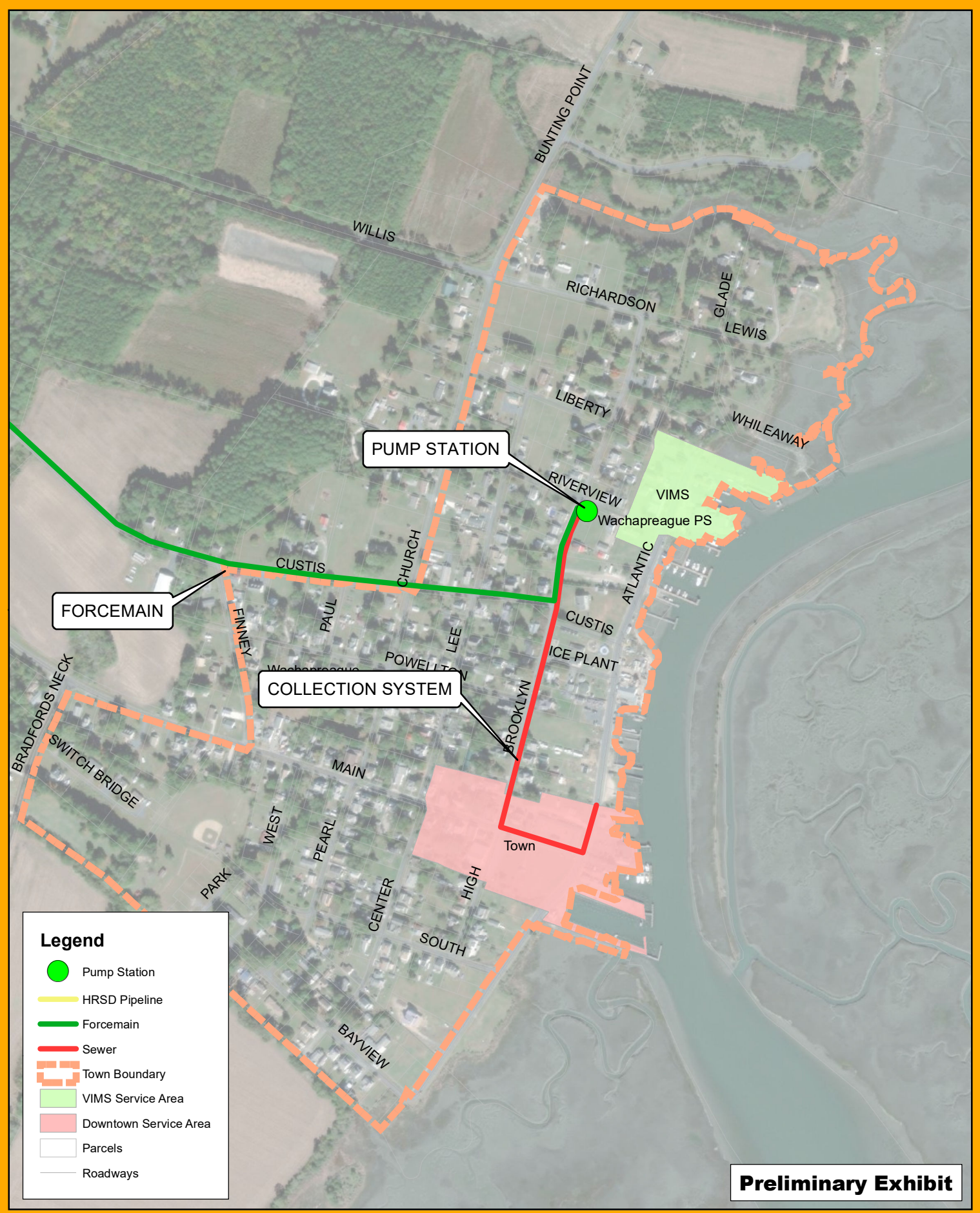
# Planning Area Sewer Map

DBF #3904A001.A01

Wachapreague Sewer Feasibility Study



L:\3904A Wachapreague\3904A001.A01 Sewer Feasibility Study\DESIGN\GIS\Maps\Wachapreague Layout Map.mxd



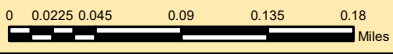
**Legend**

- Pump Station
- HRSD Pipeline
- Forcemain
- Sewer
- Town Boundary
- VIMS Service Area
- Downtown Service Area
- Parcels
- Roadways

**Preliminary Exhibit**



July 2021



# Town Sewer Map

Wachapreague Sewer Feasibility Study

DBF #3904A001.A01



**WACHAPREAGUE SEWER FEASIBILITY STUDY**  
**TOWN OF WACHAPREAGUE, ACCOMACK COUNTY, VIRGINIA**  
**PREPARED BY DAVIS, BOWEN & FRIEDEL, INC.**  
**DBF #P0002020.021**  
**May 3, 2021**

**SEWER FLOW PROJECTION ESTIMATE**

<b>Item No.</b>	<b>Description</b>	<b>Units</b>	<b>Flow/Unit (GPD/Unit)</b>	<b>Total Flow (GPD)</b>
1	VIMS	-	-	2,820
2	Hotel	60	130	7,800
3	Commercial	25	250	6,250
4	Current Residential	185	250	46,250
5	Growth Area Residential	73	250	18,250
6	Growth Area Residential - 2	16	250	4,000
<b>TOTAL FUTURE SEWER FLOW</b>				<b>85,370</b>

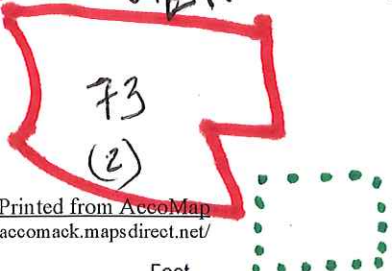
Sewer Feasibility  
Study Service Area

# Accomack County, Virginia

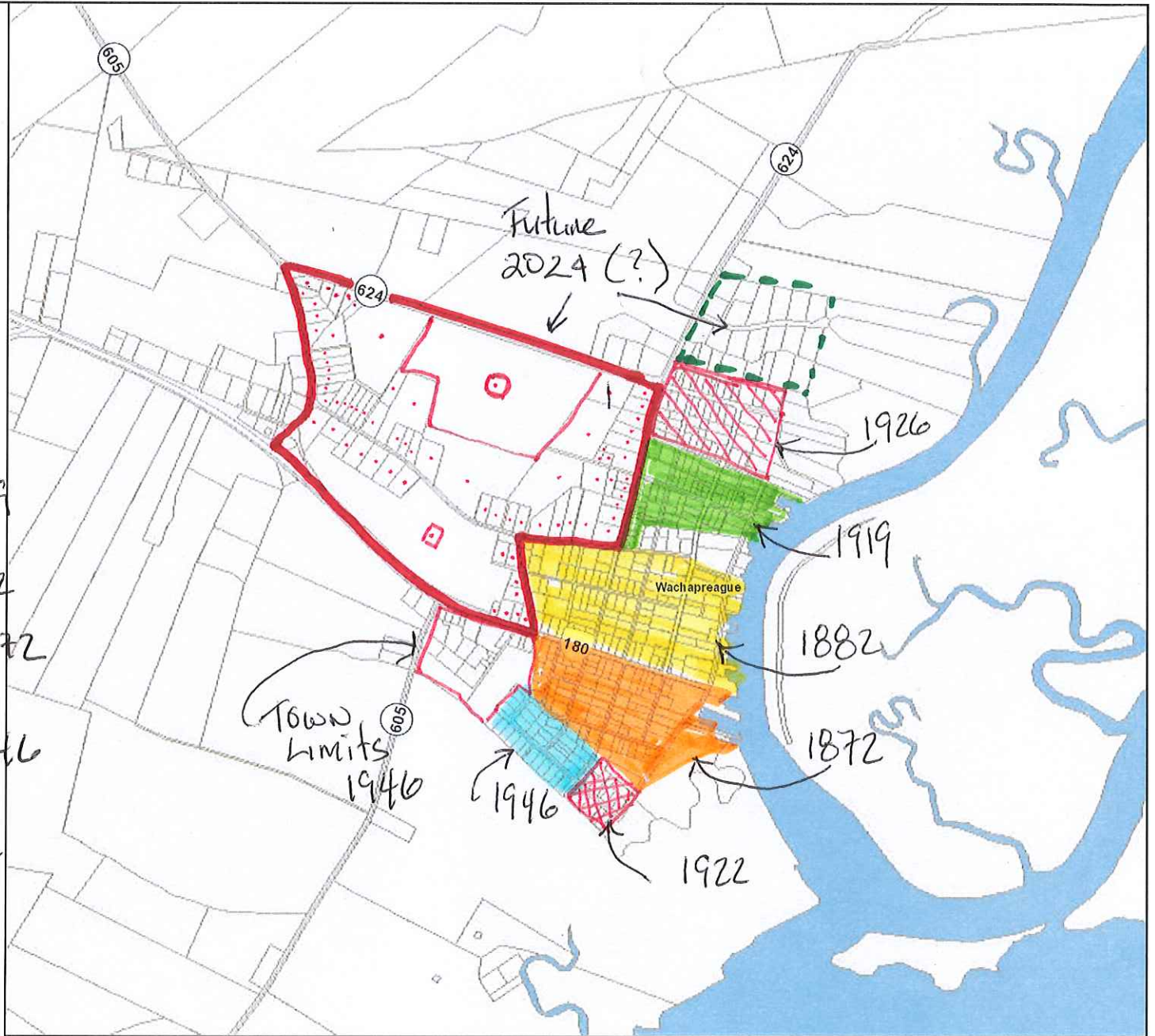
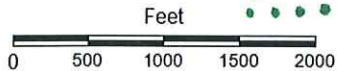
## Legend

Road Labels

-  WACH TOWN
-  WACH FD & TOWN ED
-  RICHARDSON ADDITION - 1926
-  RIVERSIDE PARK - 1919
-  DEVELOPED BY FLOYS - 1882
-  POWELLTON - 1872
-  SOUTHERN VIEW - 1946
-  SOUTHERN VIEW - 1922



Map Printed from AccoMap  
<http://accomack.mapsdirect.net/>



**Title:**

**Date:** 6/10/2020

*DISCLAIMER: This drawing is neither a legally recorded map nor a survey and is not intended to be used as such. The information displayed is a compilation of records, information, and data obtained from various sources, and Accomack County is not responsible for its accuracy or how current it may be.*